

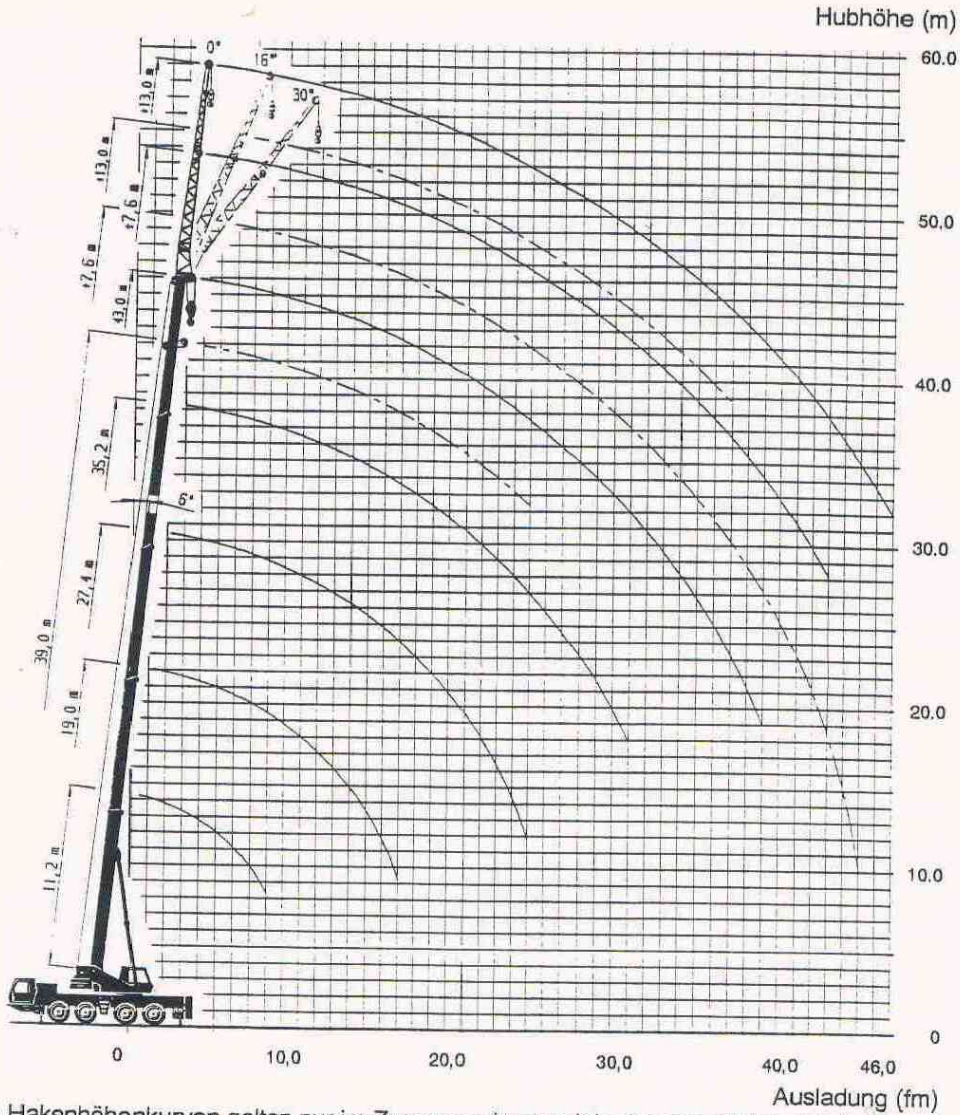
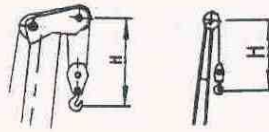
Tabela udźwigu żurawia KMK4080

	Przeciwwaga 15.8t Rozstaw podpór [8.35 x 7.2m]					
	Długość wysięgnika					
	11.2	11.2	19.0	19.1	22.9	27.0
<b>Zakres pracy</b>	360°					
<b>Teleskop I</b>	0.0	0.0	1.0	0.0	1.0	1.0
<b>Teleskop II</b>	0.0	0.0	0.0	0.5	0.5	0.5
<b>Teleskop III</b>	0.0	0.0	0.0	0.5	0.0	0.5
<b>Teleskop IV</b>	0.0	0.0	0.0	0.0	0.0	0.0
<b>Odległość od obrotu</b>	<b>Udźwig (t)</b>					
3.0	80.0	65.5				
4.0	68.2	55.2	51.5	32.0	32.0	
5.0	58.3	46.7	44.7	32.0	32.0	32.0
6.0	47.6	43.0	39.2	32.0	32.0	28.8
7.0	40.0	35.3	34.1	32.0	29.1	25.9
8.0	33.2	31.2	30.1	30.0	26.3	23.3
9.0			25.5	27.4	23.9	21.1
10.0			21.1	23.1	21.2	19.2
11.0			17.8	19.7	17.9	17.6
12.0			15.2	17.0	15.4	15.9
13.0			13.1	14.9	13.3	13.9
14.0			11.4	13.2	11.5	12.1
15.0			9.9	11.7	10.0	10.6
16.0			8.6	10.4	8.8	9.3
18.0					6.8	7.3
20.0					5.2	5.8
22.0						4.5
24.0						3.5
<b>Kod</b>	411	410				
<b>Dopuszczalna siła wiatru</b>	8 m/s					6 m/s

	<b>Przeciwwaga 15.8 t Rozstaw podpór [8.35 x 7.2m]</b>						
	<b>Długość wysięgnika</b>						
	27.1	27.4	30.9	34.9	35.2	39.0	43.0
<b>Zakres pracy</b>	360°						
<b>Teleskop I</b>	0.0	0.0	1.0	1.0	0.0	1.0	1.0
<b>Teleskop II</b>	1.0	0.0	1.0	1.0	1.0	1.0	1.0
<b>Teleskop III</b>	1.0	1.0	0.5	1.0	1.0	1.0	1.0
<b>Teleskop IV</b>	0.0	1.0	0.0	0.0	1.0	0.5	1.0
<b>Odległość od obrotu</b>	<b>Udźwig (t)</b>						
5.0	24.0	13.0	23.0				
6.0	22.2	13.0	23.0	17.0	13.0	13.0	
7.0	19.8	13.0	21.9	17.0	13.0	13.0	11.0
8.0	17.9	13.0	20.2	17.0	13.0	13.0	11.0
9.0	16.2	12.0	18.5	16.5	13.0	13.0	11.0
10.0	14.8	11.0	16.9	15.2	12.5	13.0	11.0
11.0	13.6	10.0	15.7	14.0	11.6	13.0	11.0
12.0	12.5	9.3	14.4	13.0	10.7	12.3	11.0
13.0	11.6	8.6	13.3	12.1	9.9	11.5	11.0
14.0	10.8	8.0	12.1	11.2	9.2	10.7	11.0
15.0	10.1	7.5	10.6	10.5	8.5	10.0	10.0
16.0	9.4	7.0	9.4	9.7	7.9	9.4	9.2
18.0	8.2	6.3	7.3	7.7	6.9	8.2	7.9
20.0	7.0	5.7	5.8	6.1	6.1	6.6	7.0
22.0	5.7	5.2	4.5	4.9	5.5	5.4	5.8
24.0	4.7	4.7	3.5	3.9	5.0	4.4	4.7
26.0			2.7	3.0	4.6	3.5	3.9
28.0				2.3	4.0	2.8	3.2
30.0				1.7	3.4	2.2	2.6
32.0						1.7	2.0
34.0						1.2	1.6
36.0						0.8	1.2
38.0							0.8
<b>Kod</b>	410						
<b>Dopuszczalna prędkość wiatru</b>	6						

Arbeitsbereich

Hakenflasche				
Tragfähigkeit in t	80,0	45,0	18,0	8,0
Abstand H in m	3,1	3,0	2,8	2,1



Diese Hakenhöhenkurven gelten nur im Zusammenhang mit in den Tragfähigkeitstabellen angegebenen Ausladungen.

Die Rollen- und Hakenhöhen sind theoretisch ermittelt. Die tatsächlichen Werte weichen hiervon wegen der Durchbiegung des Auslegers, je nach Belastung, ab.